

ANRIN

LEADING WATER



Technical
data sheet

SELF GL-100

Technical data sheet

ANRIN SELF drainage channels GL-100

Product specifications

Product specifications		SELF GL-100
Material	Resin concrete	
Length	50 cm and 100 cm	
Width	13 cm	
Height	8 - 25 cm	
Weight	10 - 18 kg	
Nominal width	100 mm	
Slope type	Stepped invert or Constant invert	
Joint type	UNILINK® joint	
Fastening	TwistLock fastening	
Load capacity	A15, B125, C250 according DIN 19580 / EN 1433	
Cover gratings	Steel slotted grating galvanised, cl. A15, steel mesh grating galvanised, cl. B125, ductile-iron slotted grating, cl. C250, polyamid slotted grating, Heelguard Design, cl. B125	

Material properties

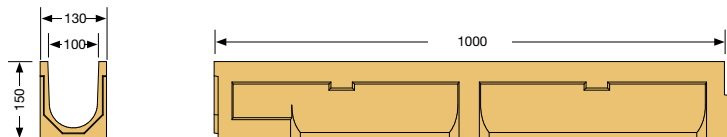
Channel / component body	
Polymer concrete	polyester resin-based with mineral aggregates, additives
Compressive strength	≥ 90 N/mm ²
Bending tensile strength	≥ 22 N/mm ²
Modulus of elasticity	ca. 25 kN/mm ²
Density	2.1 – 2.3 g/dm ³
Heat resistance	100° C (continuous load)
Frost resistance	- 50° C
Water penetration depth	0 mm
Water absorption	0,05 %

Channel cover	
Cover gratings	Slotted steel grating, galvanised cl. A 15, Mesh grating, galvanised cl. B 125, Slotted cast iron cl. C 250, Polyamid slotted grating, Heelguard Design, cl. B125

Technical data sheet

ANRIN SELF drainage channels GL-100

Channel dimensions



Cover gratings



Slotted steel grating

galvanised steel
Length: 50 cm, 100 cm

Load capacity:
A15



Mesh grating

galvanised steel
Length: 50 cm, 100 cm

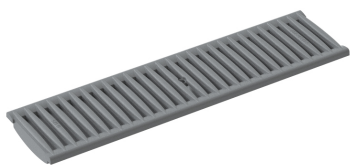
Load capacity:
B125



Slotted grating OvalGrip Design

cast-iron
Length: 50 cm

Load capacity:
C250



Polyamid Slotted grating
HEELGUARD design

polyamid
Length: 50 cm
Load capacity:
B125

Technical data sheet

ANRIN SELF drainage channels GL-100

Channel types

Article no.	EAN	Designation		Length cm	Width cm	Height cm	Weight kg
07200000	4026857007524	GL-100 Channel No.	0	100	13.0	15.0	10.8
07200410	4026857028338	GL-100 Channel No.	0RV	100	13.0	15.0	11.7
07200005	4026857028000	GL-100 Channel No.	0/05	50	13.0	15.0	8.1
07201000	4026857007760	GL-100 Channel No.	010	100	13.0	20.0	13.7
07200800	4026857007753	GL-100 Channel No.	080	100	13.0	8.0	8.9
07200500	4026857007739	GL-100 Channel No.	05	100	13.0	17.5	12.3
07200550	4026857007746	GL-100 Channel No.	05/0,5	50	13.0	17.5	6.1
07201050	4026857007777	GL-100 Channel No.	010/0,5	50	13.0	20.0	6.8
07202000	4026857007784	GL-100 Channel No.	020	100	13.0	25.0	17.3
07202050	4026857007791	GL-100 Channel No.	020/0.5	50	13.0	17.5	8.6
07203000	4026857035909	GL-100 Channel No.	0100	100	13.0	10.0	10.6

Accessories

Article no.	EAN	Designation		Length cm	Breite cm	Height cm	Weight kg
07206000	4026857007852	GL-100 Sump unit		50	13.0	56.3	24.0
07207100	4026857007906	GL-100 Closed end cap for channel No.	0 - 010				
07208100	4026857007920	GL-100 Closed end cap for channel No. 0 - 010	20				
07208800	4026857026525	GL-100 Closed end cap for channel No. 0 - 010	080				
07207000	4026857024064	GL-100 End cap with pipe socket for channel No.	0				
07207200	4026857007913	GL-100 End cap with pipe socket for channel No.	10				
07208200	4026857007937	GL-100 End cap with pipe socket for channel No.	20				

Cover gratings with TwistLock fastening

Article no.	EAN	Designation		Length cm	Width cm	Height cm	Weight kg
07203200	4026857007807	GL-100 Slotted steel grating galvanised, cl. A 15		100	12.4	2.1	1.9
07203220	4026857007814	GL-100 Slotted steel grating galvanised, cl. A 15		50	12.4	2.1	1.2
07203300	4026857007821	GL-100 Mesh grating galvanised, cl. B 125		100	12.4	2.1	3.2
07203320	4026857007838	GL-100 Mesh grating galvanised, cl. B 125		50	12.4	2.1	1.6
07203500	4026857026662	GL-100 Slotted cast iron, cl. C 250		50	12.4	2.1	3.2
07203330	4026857036944	GL-100 Polyamid slotted grating, HEELGUARD Design, cL.B125		50	13	2,1	0,6

Technical data sheet

ANRIN SELF drainage channels

Installation instructions

The following installation guidelines are schematic representations. These are provided as examples and are non-binding. The information provided here is based on our long-term experience in excavation and road construction as well as the state-of-the-art technology.

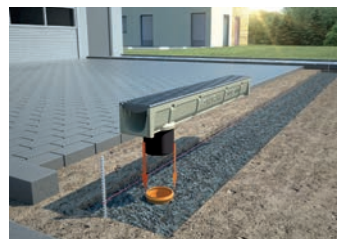
Despite this, designers and planners are always obligated to check the products and the installation instructions for their appropriateness. The example details are simplified recommendations for execution. Constructions are to be re-created on a project-specific basis.

Important: Insert gratings for the installation.

Installation instructions



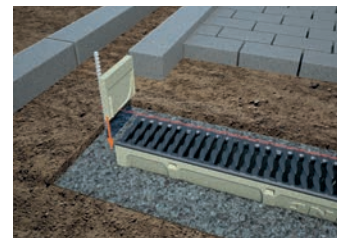
1. Excavate trench. Fill in and pre-compact base course. Apply concrete pad, 3 parts sand + 1 part cement + 1 part water, to base course.



2. Connect pipe connections to the pipeline.



3. Place channel elements and sump unit on the concrete pad. Align components so that they are level.



4. Position end caps.



5. Complete the series and ensure the level alignment of the components



6. Backfill the concrete pad



7. Lay the paving



8. The surface should be 2 to 5 mm higher than the cover grating.

Guidelines and regulations

DIN EN 1433	“Drainage channels for vehicular and pedestrian areas”
DIN 19580	“Drainage channels for vehicular and pedestrian areas ...”
RStO	“Guidelines for the standardisation of the superstructure of vehicular areas”
DIN EN 206-1	“Concrete. Specification, performance, production and conformity”
DIN EN 1045-2	“Concrete, reinforced and prestressed concrete structures. Part 2: Concrete – Specification, properties, production and Application rules for DIN EN 206-1”



ANRIN GmbH
Siemensstr. 1
59609 Anröchte
Germany

+49 (0) 29 47.97 81-0
www.anrin.com
info@anrin.com